



# CHEMFLO<sup>®</sup> 2

## 1-1/2" x 1" End Suction Centrifugal Pump

Made with high quality investment cast 316 stainless steel components, the ChemFlo<sup>®</sup> series of pumps are designed to be applied in a wide range of pumping applications where stainless steel is required.

The ChemFlo<sup>®</sup> 2 pumps utilize a semi open impeller design to allow for passage of larger solid sizes than similar sized enclosed impellers. Several mechanical seal options are available in addition to the standard type 2100 carbon / ceramic / Viton mechanical seal.

ChemFlo<sup>®</sup> 2 pumps are offered in two configurations, pump (with motor) and PumPAK<sup>®</sup> (without motor) versions. Electric and hydraulic motors can be close coupled to ChemFlo<sup>®</sup> 2 pumps or pedestal mounted versions are also available for long coupling.

Further expanding the versatility of the ChemFlo<sup>®</sup> series is the CFB 2 pump, a ChemFlo<sup>®</sup> 2 in NiBrAl material. All wetted parts are produced in CA 958 nickel aluminum bronze including the drive sleeve to maximize corrosion protection in seawater applications.



**Application:**

- Agricultural
- Commercial
- Industrial
- Marine
- OEM

**Drive Sleeve:**

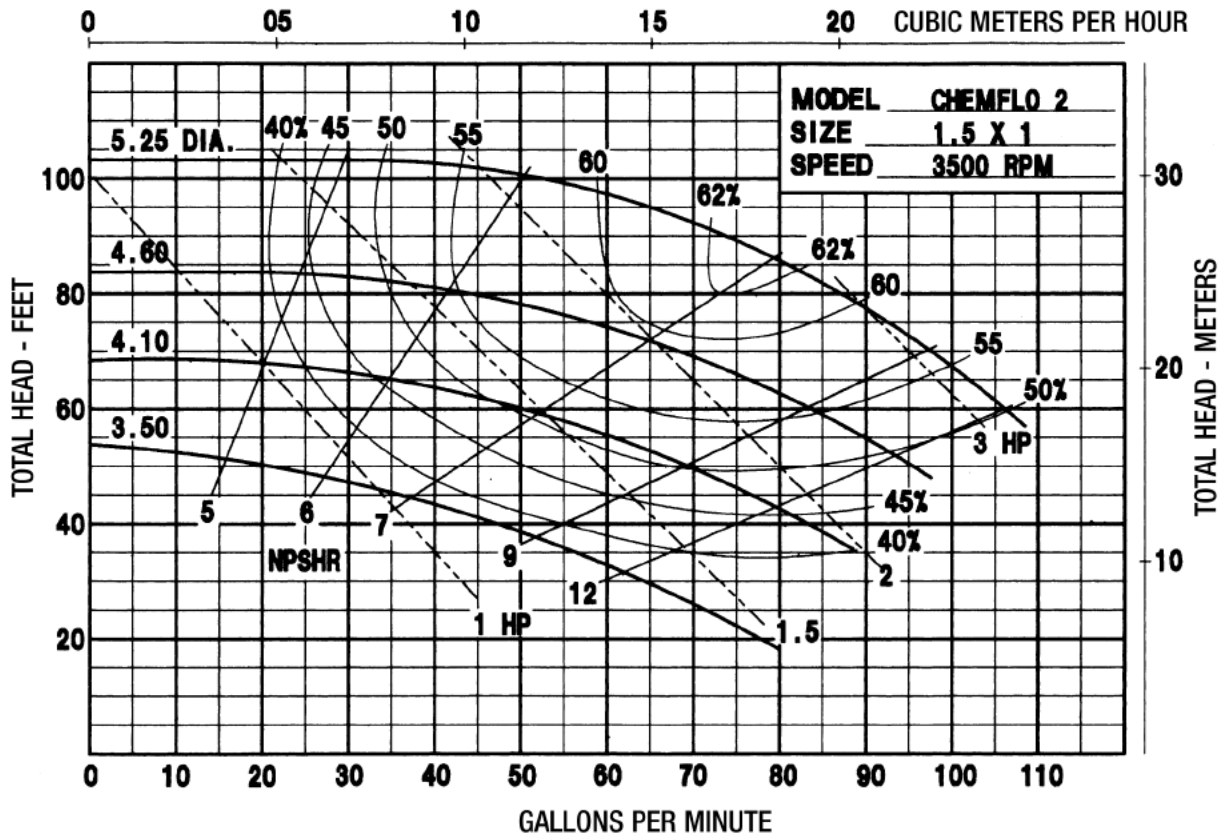
- 316 stainless steel

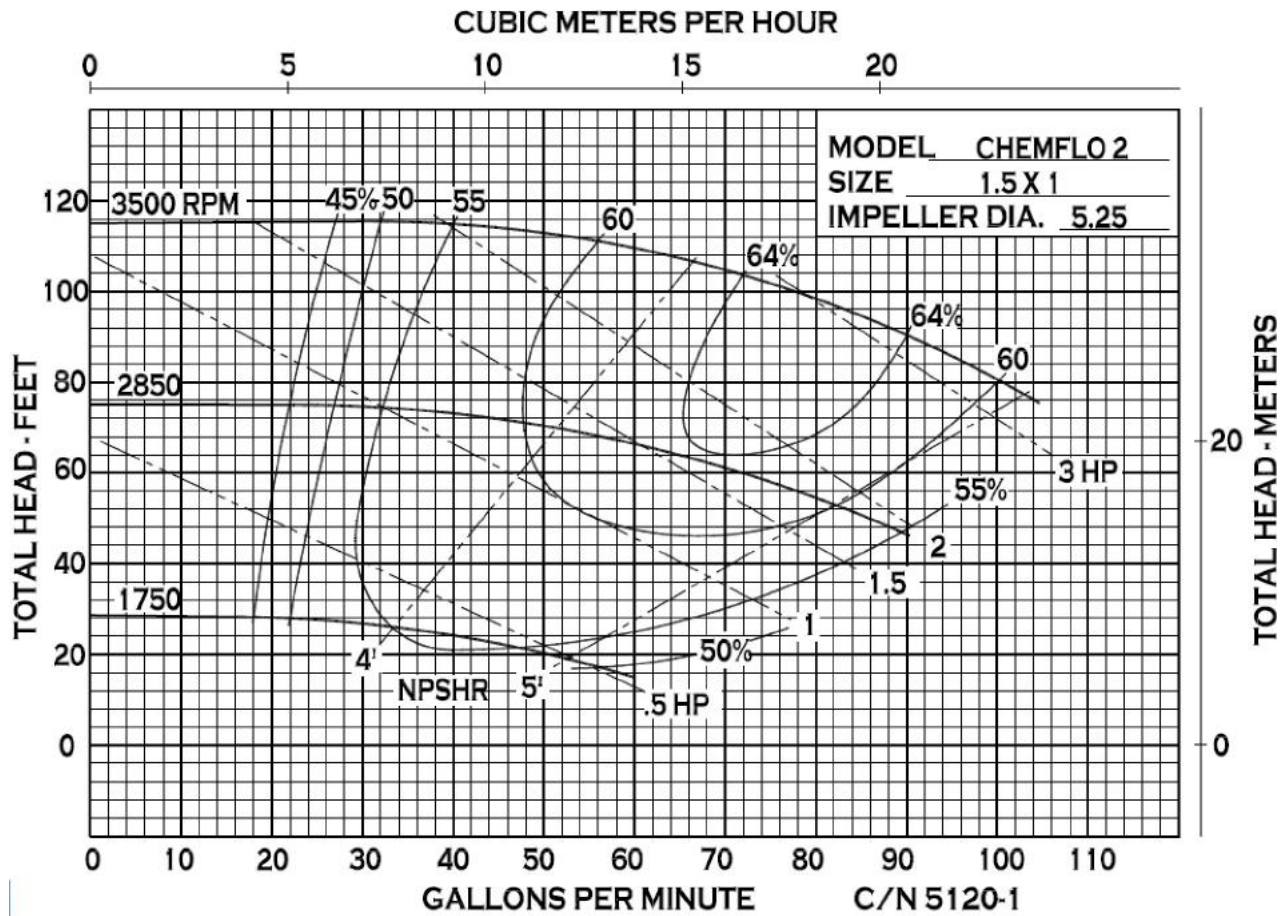
**Options:**

- Hydraulic motor .22 cu. in.
- Hydraulic motor .37 cu. in.
- Tap for recirculation or seal flush

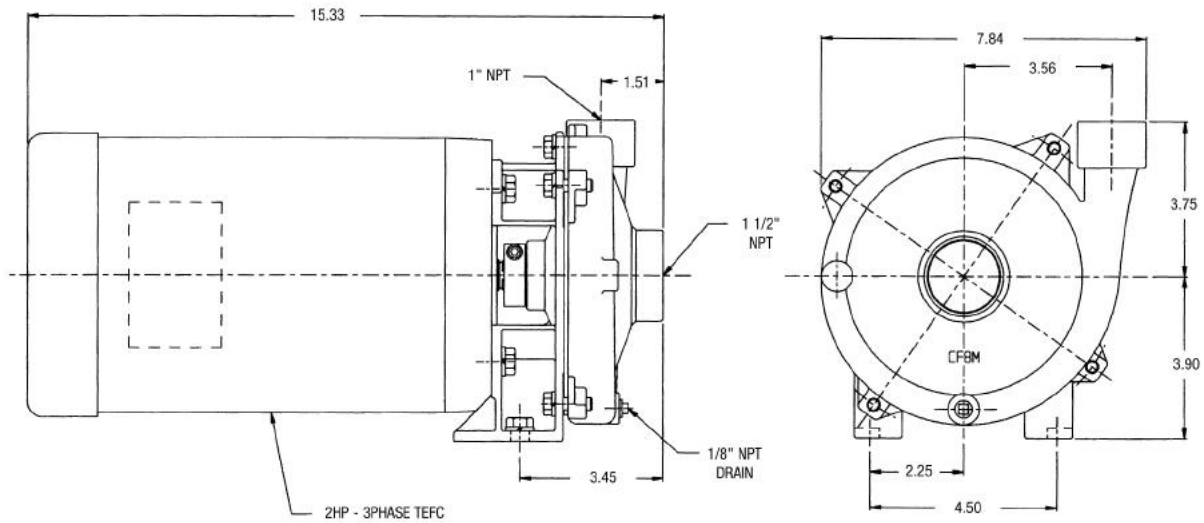
### SPECIFICATIONS:

Suction and Discharge	.. 1-1/2" x 1" NPT
Materials of Construction	316 stainless steel CFB (nickel aluminum bronze)
Flow	..... Up to 108 GPM
Head Feet	..... Up to 103'
Impeller	..... 5.25" semi-open, cast 316 stainless steel
Motor	..... Up to 3 HP
Drive Options	..... Close coupled 145TC Close coupled 56C Pedestal PumPAK <sup>®</sup> (without motor)
Seal	..... Special seal material combinations available (consult factory) Standard carbon / ceramic / Viton

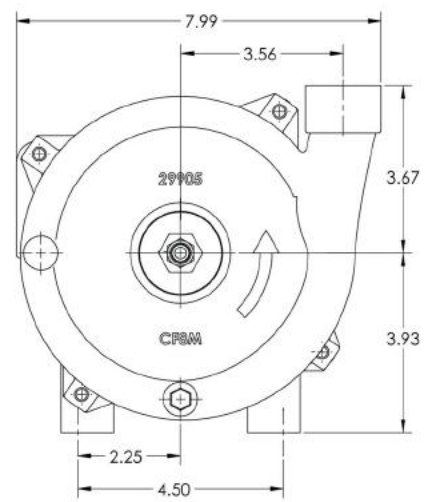
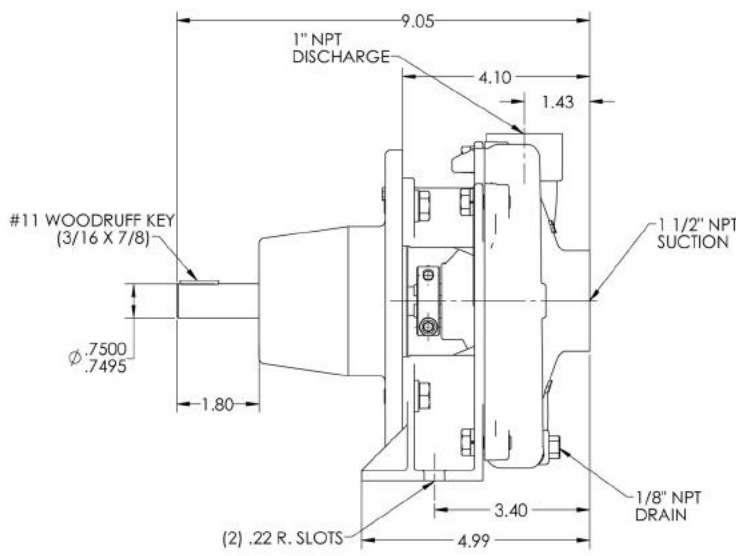




# CHEMFLO® 2



DRAWING NO  
30478



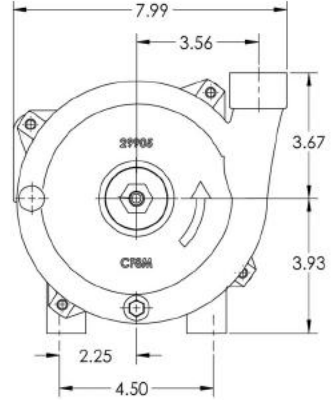
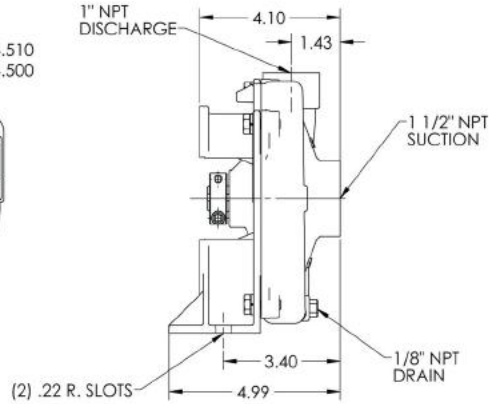
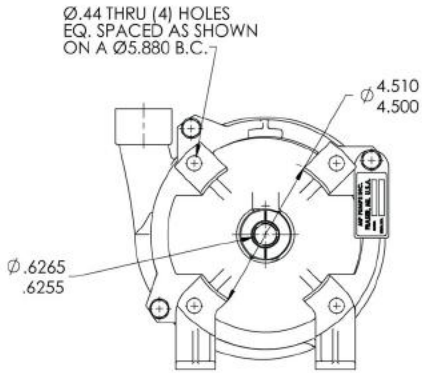
NOTE: THE DRAWING IS THE PROPERTY OF MP PUMPS, INC. IT IS UNLAWFUL TO REPRODUCE, COPY, OR TRANSMIT THIS INFORMATION IN ANY MANNER WITHOUT THE WRITTEN CONSENT OF MP PUMPS, INC. RETURN TO MP PUMPS IMMEDIATELY WHEN REQUESTED.

G						UNLESS OTHERWISE NOTED THIRD ANGLE PROJECTION	<b>MP PUMPS, INC.</b>			
F						2 PLACE DIM 3 PLACE DIM ANGULAR DIM	MP PUMPS, INC. FRASER, MICHIGAN 48026, U.S.A.			
E						DO NOT SCALE	MATERIAL	SCALE	DATE FOR	MADE FROM
D							STAINLESS STEEL	FULL	10 25-11	
C							DRAWN BY	DATE COMP	APPROV	D.D.
B										
A										
REV	DESCRIPTION	REVISED	DATE	BY		NAME	CHEMFLO 2 PED. ASSY.			DRAWING NO <b>30478</b>



34800 BENNETT • FRASER, MI 48026-1686  
(586) 293-8240 • FAX (586) 293-8469  
(800) 563-8006 • www.mppumps.com

DRAWING NO.  
29916

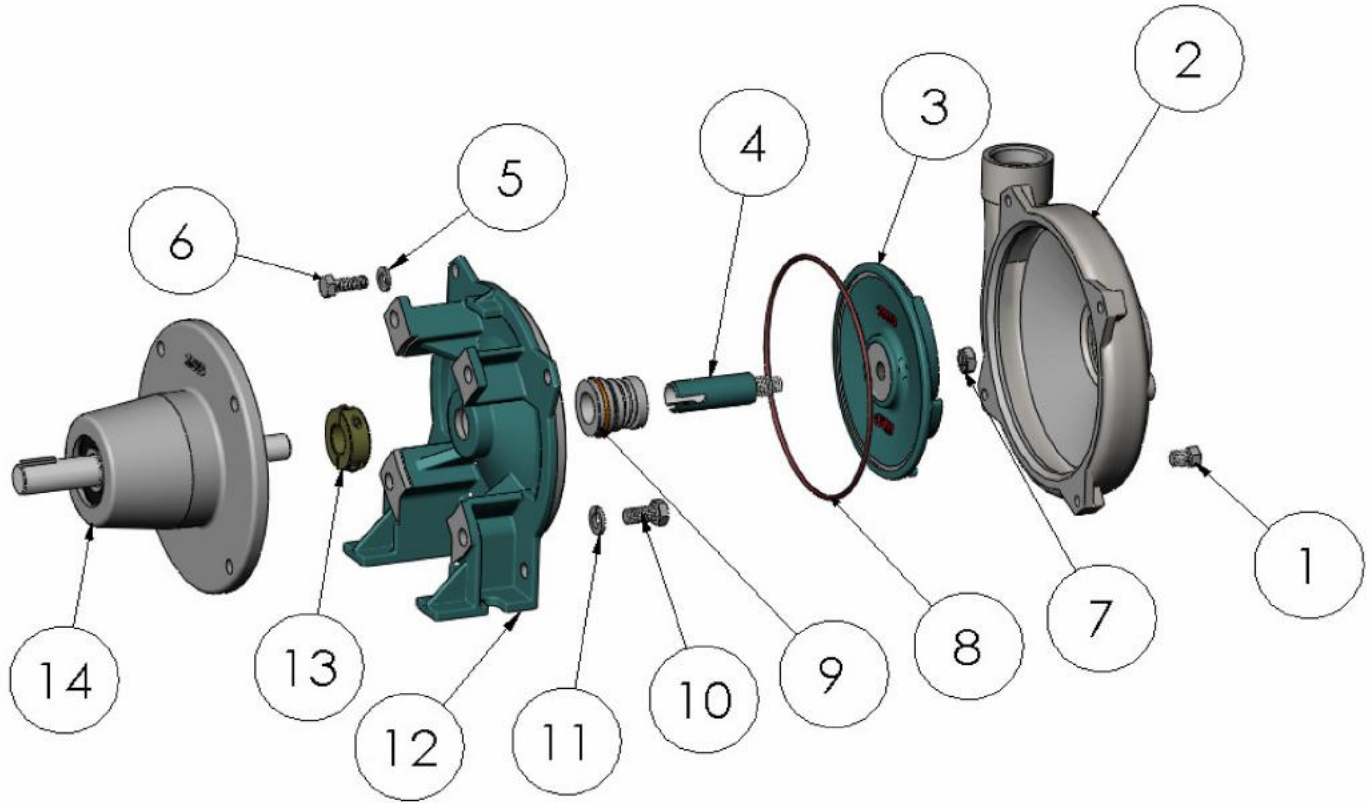


NOTE: THIS DRAWING OR PRINT, PROPERTY OF MP PUMPS INC. CONTAINS PROPRIETARY AND CONFIDENTIAL INFORMATION IT SHALL BE USED ONLY AS APPROVED BY MP PUMPS INC. SHALL NOT BE GIVEN TO OTHERS OR COPIED WITHOUT THE WRITTEN CONSENT OF MP PUMPS. RETURN TO MP PUMPS PROMPTLY WHEN REQUESTED.

W/5.25 DIA. IMPELLER

G												UNLESS OTHERWISE NOTED THIRD ANGLE PROJECTION		<b>MP PUMPS, INC.</b>	
F												2 PLACE DIM 3 PLACE DIM ANGULAR DIM		<b>MP PUMPS INC.</b> FRASER, MICHIGAN 48026, U.S.A.	
E												DO NOT SCALE	MATERIAL STAINLESS STEEL	SCALE FULL	
D													DRAWN BY C.W.	DATE COMP. 10-20-11	APPROV. D.D.
C															
B															
A															
REV	DESCRIPTION	DRAWN	DATE	BY								NAME <b>CF 2 PUMPAK</b>			DRAWING NO. <b>29916</b>



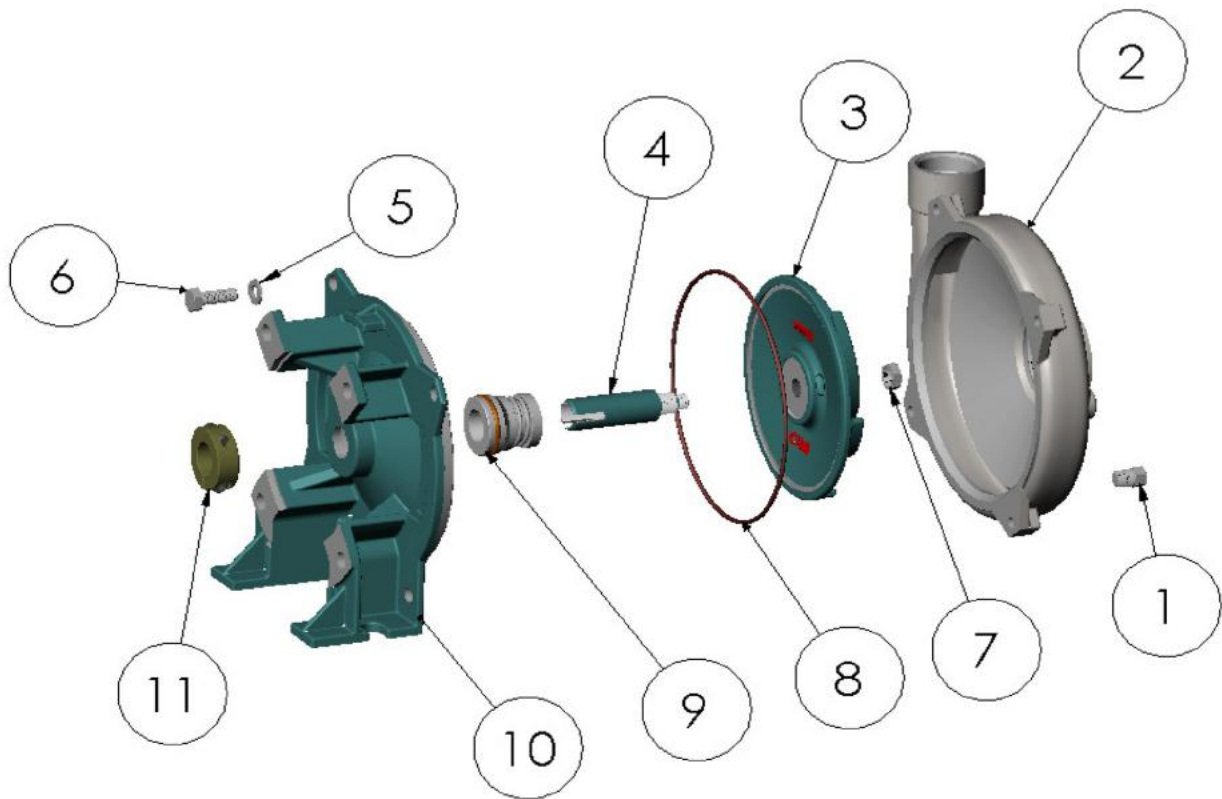


ITEM NO.	PART NO.	DESCRIPTION	QTY.
1	21255	PIPE PLUG S.S. - 1/8 NPT	1
2	29906	HOUSING S.S.	1
3	29912	IMPELLER S.S. - 5.25 DIA.	1
4	29785	DRIVE SLEEVE S.S.	1
5	21238	LOCKWASHER S.S. - 5/16	4
6	21242	HEX HD. CAPSCREW S.S. - 5/16-18 X .88	4
7	35598	HEX JAM NUT S.S.	1
*	8	O RING - VITON	1
*	9	SEAL ASSY. - 3/4" T-2100	1
10	25663	HEX. HD. CAPSCREW S.S. - 3/8-16 X 3.4	4
11	21266	LOCKWASHER S.S. - 3/8	4
12	29908	ADAPTER S.S.	1
13	28049	CLAMP S.S. - 3/4" SL.	1
14	29670	PEDESTAL ASSY.	1

\* - RECOMMENDED REPLACEMENT PARTS







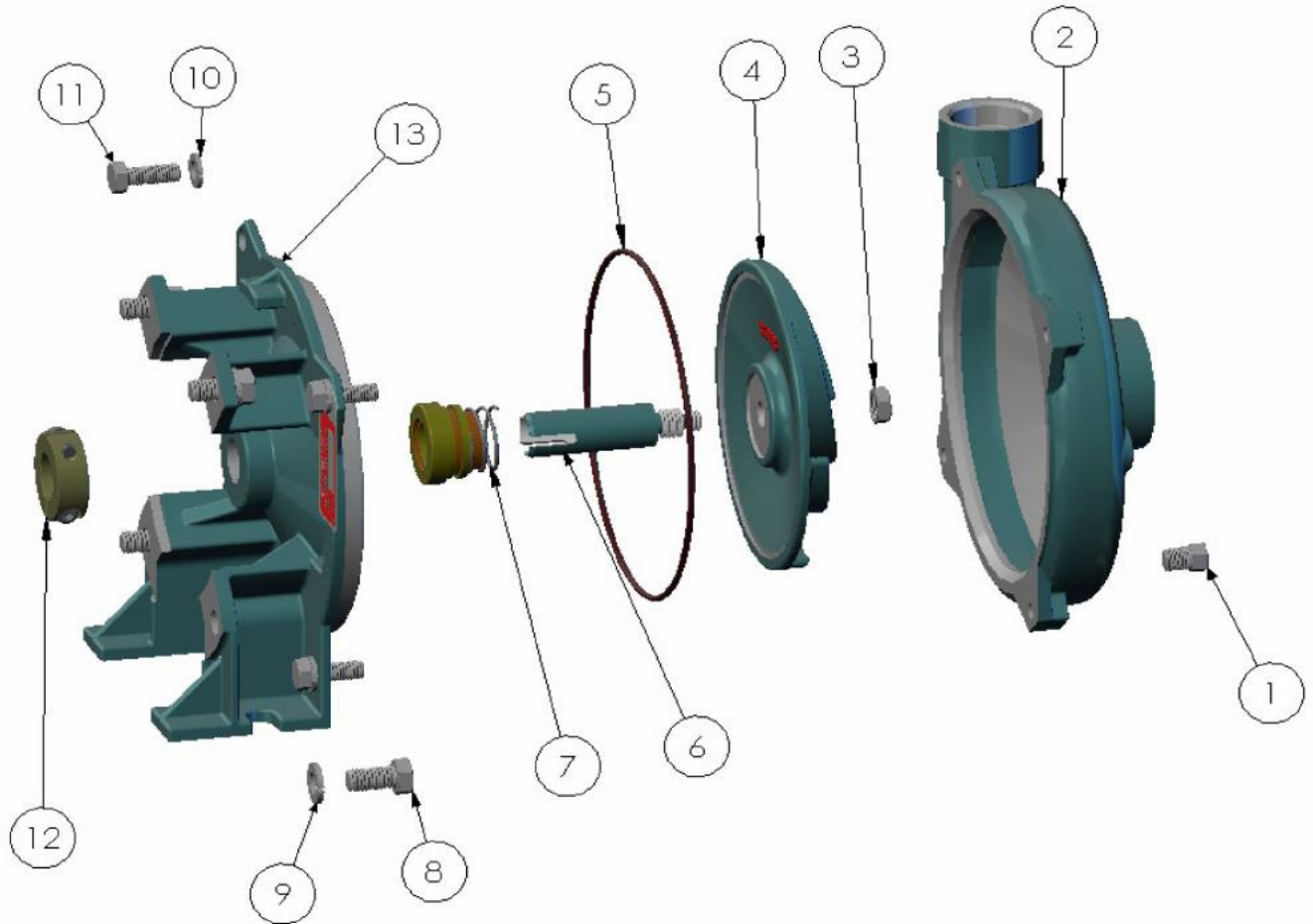
ITEM NO.	PART NO.	DESCRIPTION	QTY.
1	21255	PIPE PLUG S.S. - 1/8 NPT	1
2	29906	HOUSING S.S.	1
3	29912	IMPELLER S.S. - 5.25 DIA.	1
4	29785	DRIVE SLEEVE S.S.	1
5	21238	LOCKWASHER S.S. - 5/16	4
6	21242	HEX HD. CAPSCREW S.S. - 5/16-18 X .88	4
7	35598	HEX JAM NUT S.S.	1
* 8	29715	O RING - VITON	1
* 9	30061	SEAL ASSY. - 3/4" T-2100	1
10	29908	ADAPTER S.S.	1
11	28049	CLAMP S.S. - 3/4" SL.	1

\*- RECOMMENDED REPLACEMENT PARTS



34800 BENNETT • FRASER, MI 48026-1686  
 (586) 293-8240 • FAX (586) 293-8469  
 (800) 563-8006 • www.mppumps.com

36381



ITEM NO.	PART NO.	DESCRIPTION	QTY.
1	36355	PIPE PLUG BRONZE - 1/8 NPT	1
2	36341	HOUSING BRONZE	1
3	36354	HEX JAM NUT BRONZE - 3/8-24	1
4	36349	IMPELLER BRONZE - 5.25 DIA.	1
* 5	29715	O RING - VITON	1
6	36353	DRIVE SLEEVE BRONZE	1
* 7	30061	SEAL ASSY. - 3/4" T-2100	1
8	25663	HEX HD. CAPSCREW S.S. - 3/8-16 X .75	4
9	21266	LOCKWASHER S.S. - 3/8	4
10	21238	LOCKWASHER S.S. - 5/16	4
11	21242	HEX HD. CAPSCREW S.S. - 5/16-18 X .88	4
12	36384	CLAMP S.S. - 3/4" SL.	1
13	36345	ADAPTER BRONZE	1

\*- RECOMMENDED REPLACEMENT PARTS



34800 BENNETT • FRASER, MI 48026-1686  
 (586) 293-8240 • FAX (586) 293-8469  
 (800) 563-8006 • www.mppumps.com