



CHEMFLO[®] 1

Stainless Steel Centrifugal with Enclosed Impeller

MP Pumps has re-designed the Chemflo[®] 1 housing allowing for the acceptance of both a semi-open and enclosed impeller. The enclosed impeller improves both the pressure capability and pump efficiency by 15% over the semi-open impeller making it an ideal option when pumping fluids without large solids. Maximum solids should not exceed .15 diameter.

All wetted components are 316 investment cast stainless steel providing superior corrosion resistance when pumping chemical compounds. The Chemflo[®] 1 is adaptable for close coupling to both 56C and 145TC NEMA frame electric motors. Pedestal (Bare Shaft) mounting is available for long-coupling. The Chemflo[®] 1 is also available with the MP Hy-Speed hydraulic motor.



SPECIFICATIONS:

O-ring	Viton
Port Sizes	1-1/2" x 1" NPT
Housing	316 SS Investment Cast
Flow	Up to 110 GPM
Impeller	316 SS Enclosed Investment Cast
Seal	Carbon, Ceramic, Viton Type 2100, Special Seals Available upon Request

Application:

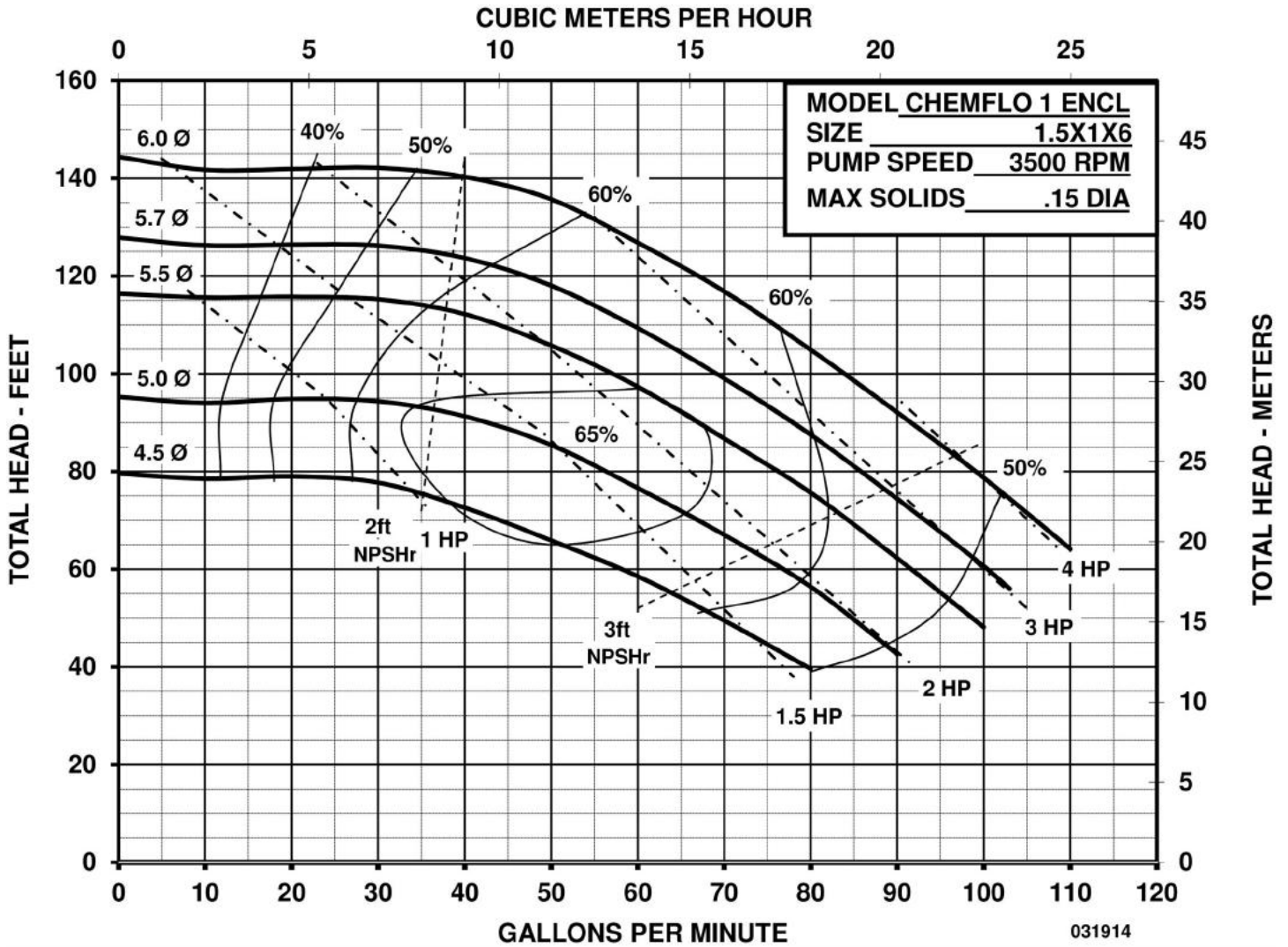
- Commercial
- Industrial
- Marine

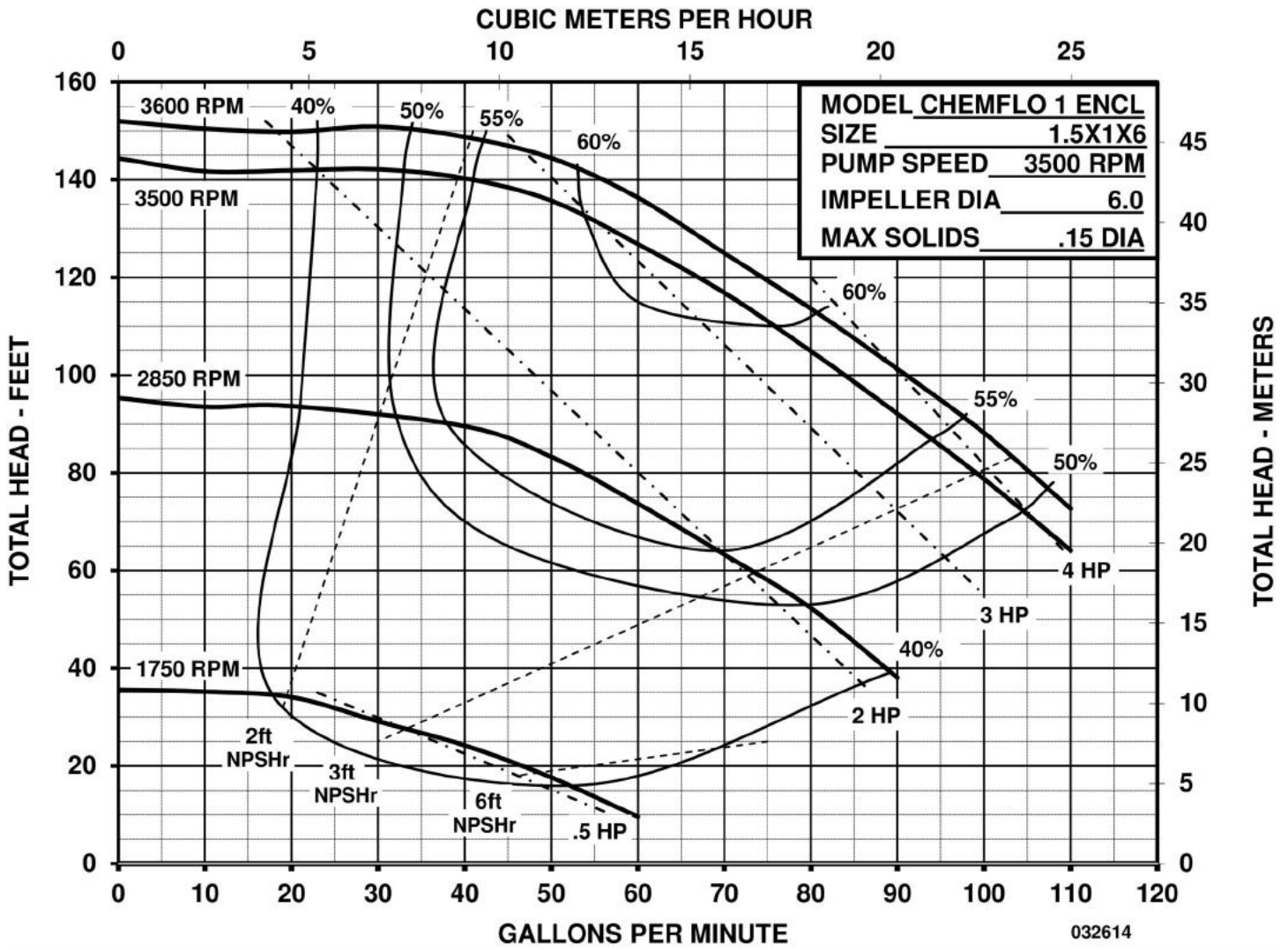
Adaptor:

- 316 SS Investment Cast

Mounting Options:

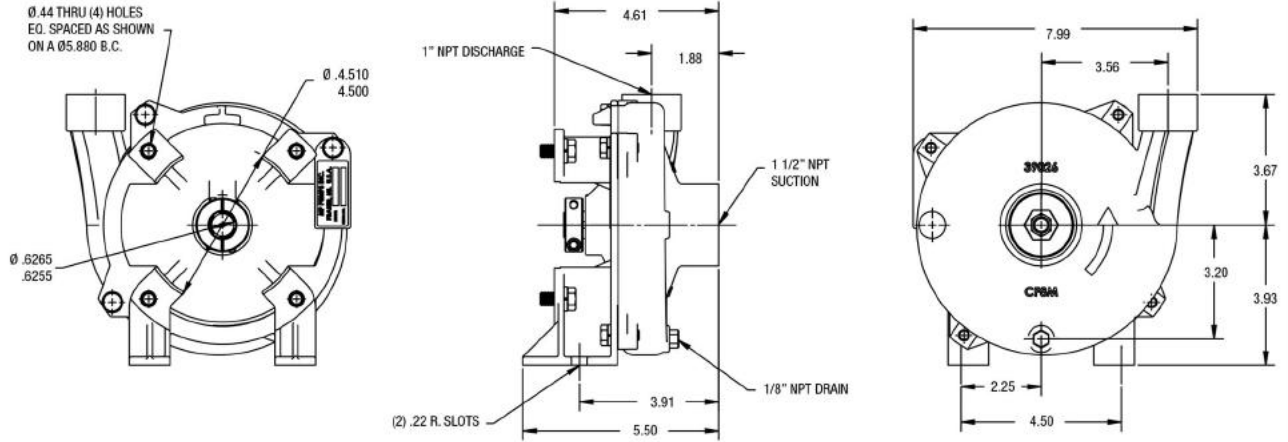
- PumPak[®], Pedestal, Hy-Speed Hydraulic, Close Coupled - 56C - 145TC



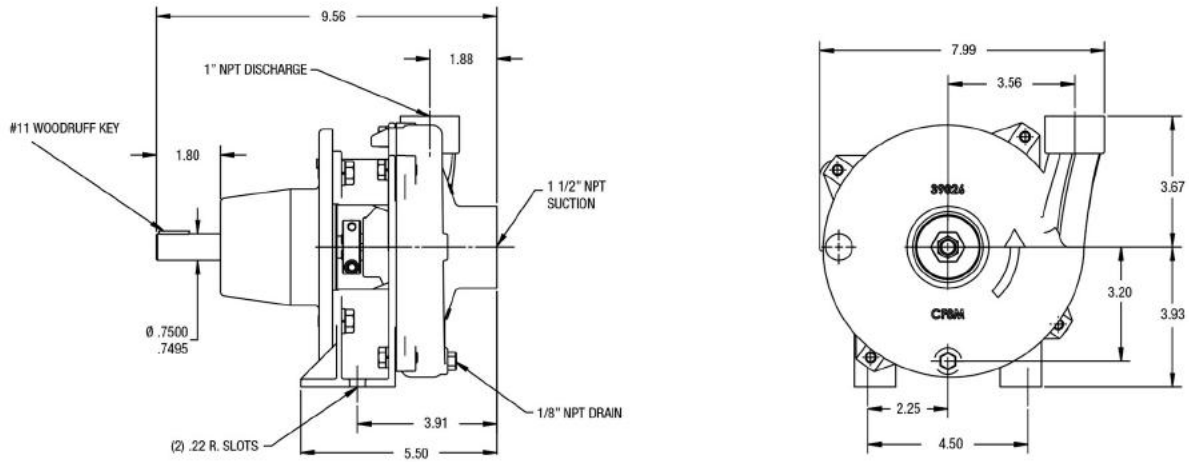


34800 BENNETT • FRASER, MI 48026-1686
 (586) 293-8240 • FAX (586) 293-8469
 (800) 563-8006 • www.mppumps.com

CHEMFLO 1 56C Face PumPak Dimensions



CHEMFLO 1 Pedestal Dimensions



CHEMFLO 1 Close Coupled Electric Motor Dimensions

