



MDX

1" x 1" Centrifugal Transportation Circulator

The MDX is a magnetically-driven sealless circulator that produces flows to 25 GPM and pressures to 20' TDH, 12 or 24V DC with an optional brushless DC motor.



SPECIFICATIONS:

- Materials of Construction Aluminum
- Flow Up to 25 GPM
- Head Feet Up to 20'
- Impeller 2.5" semi-open stainless steel
- Drive Options Close coupled 12V DC
Close coupled 24V DC
- Seal Magnetically driven no mechanical seal required

Application:

- Agricultural
- Commercial
- Industrial
- Marine
- OEM
- Transportation

Base:

- (2) bolt integrated mounting foot cast into pump housing

Features:

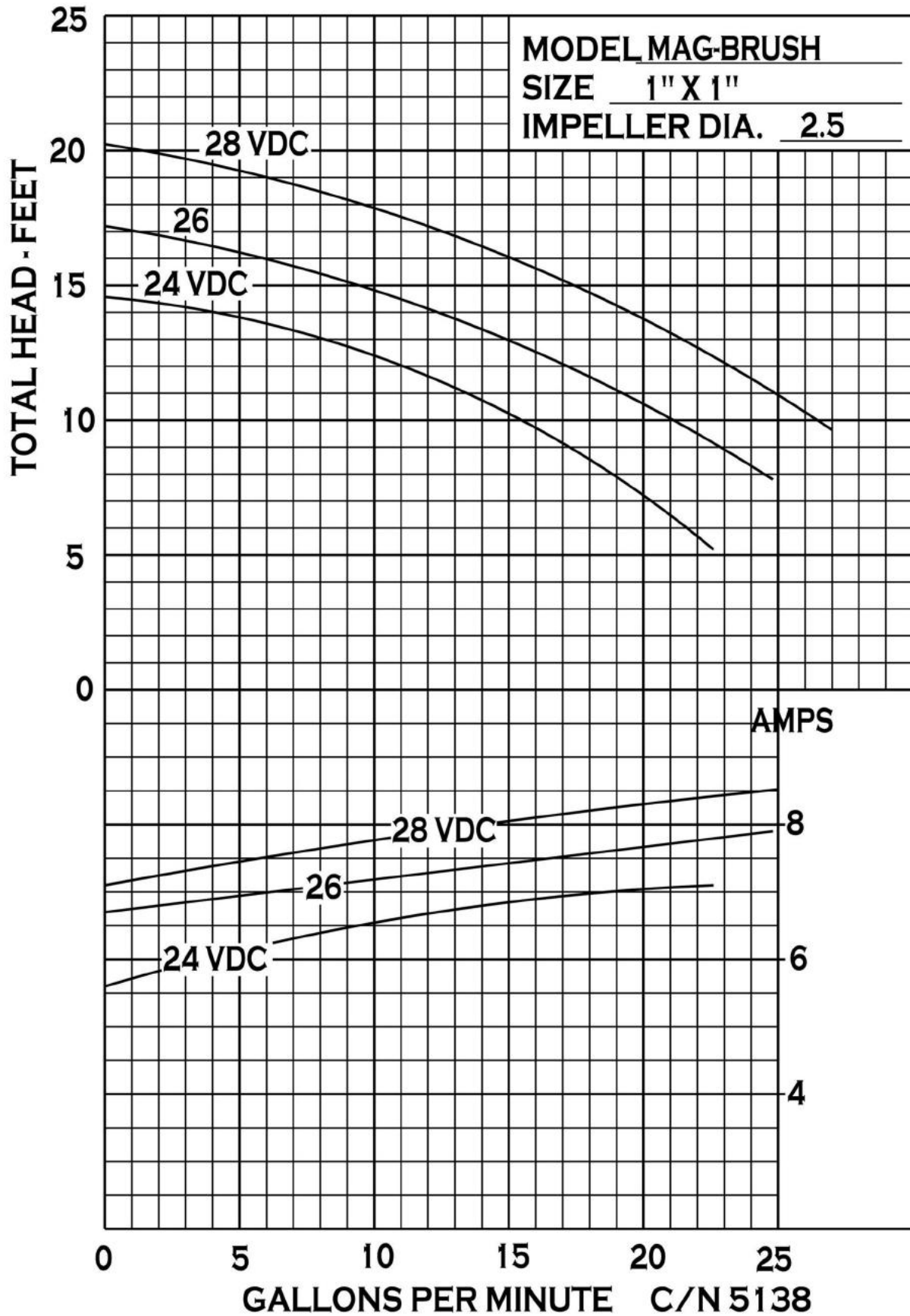
- Dual 18" long 14 AWG red (positive) black (negative) power leads
- Housing has 1" (4) bolt flanged suction & (2) bolt flanged discharge connections
- Motor enclosure is splash and weather resistant
- Motor has brushed or brushless configurations with sealed control electronics
- Thermally protected against overload and overtemp with automatic reset

Options:

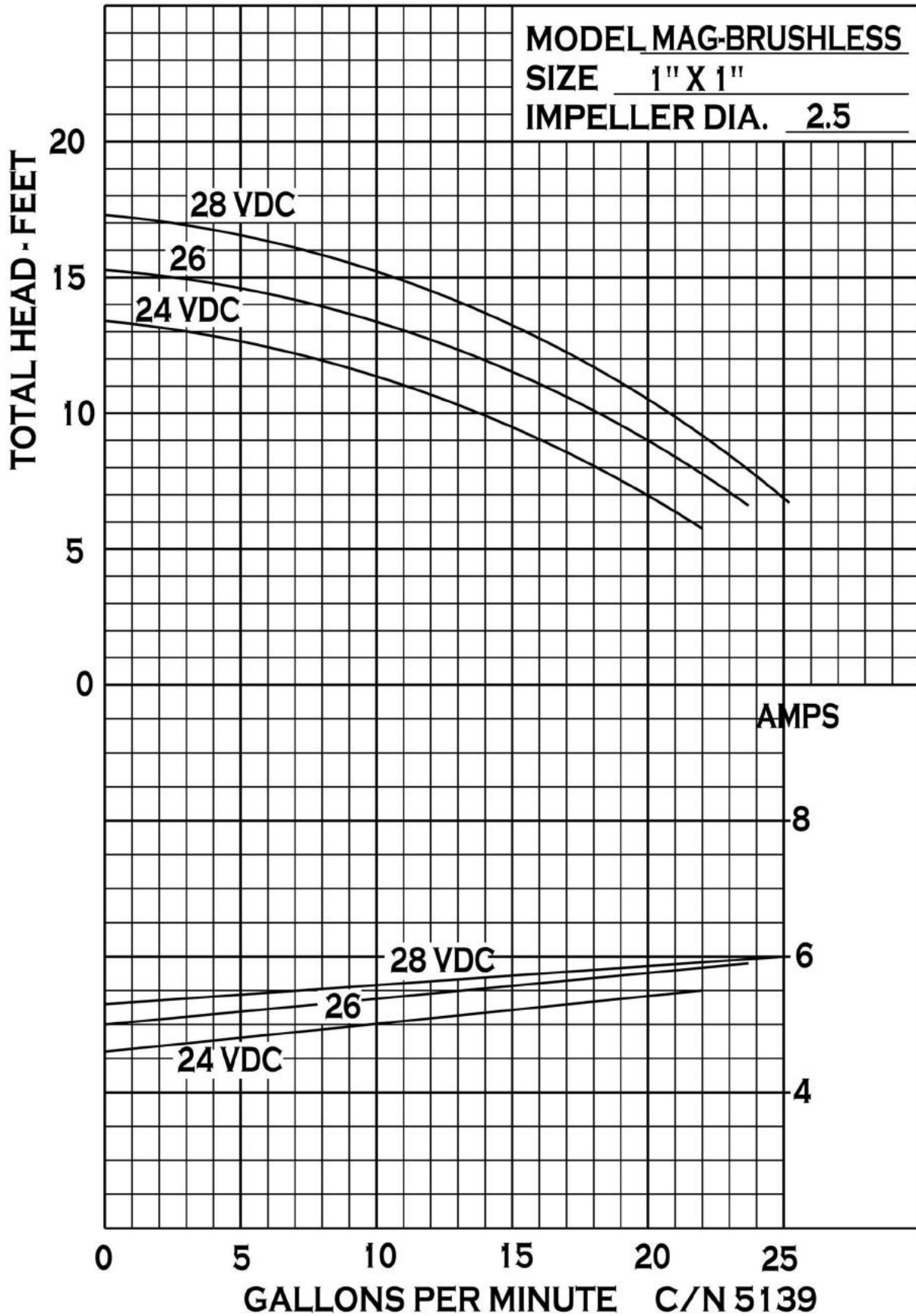
- Adapters available to convert flanged connections to 1" female NPT
- Optional mounting base is adjustable or removable

Temperature:

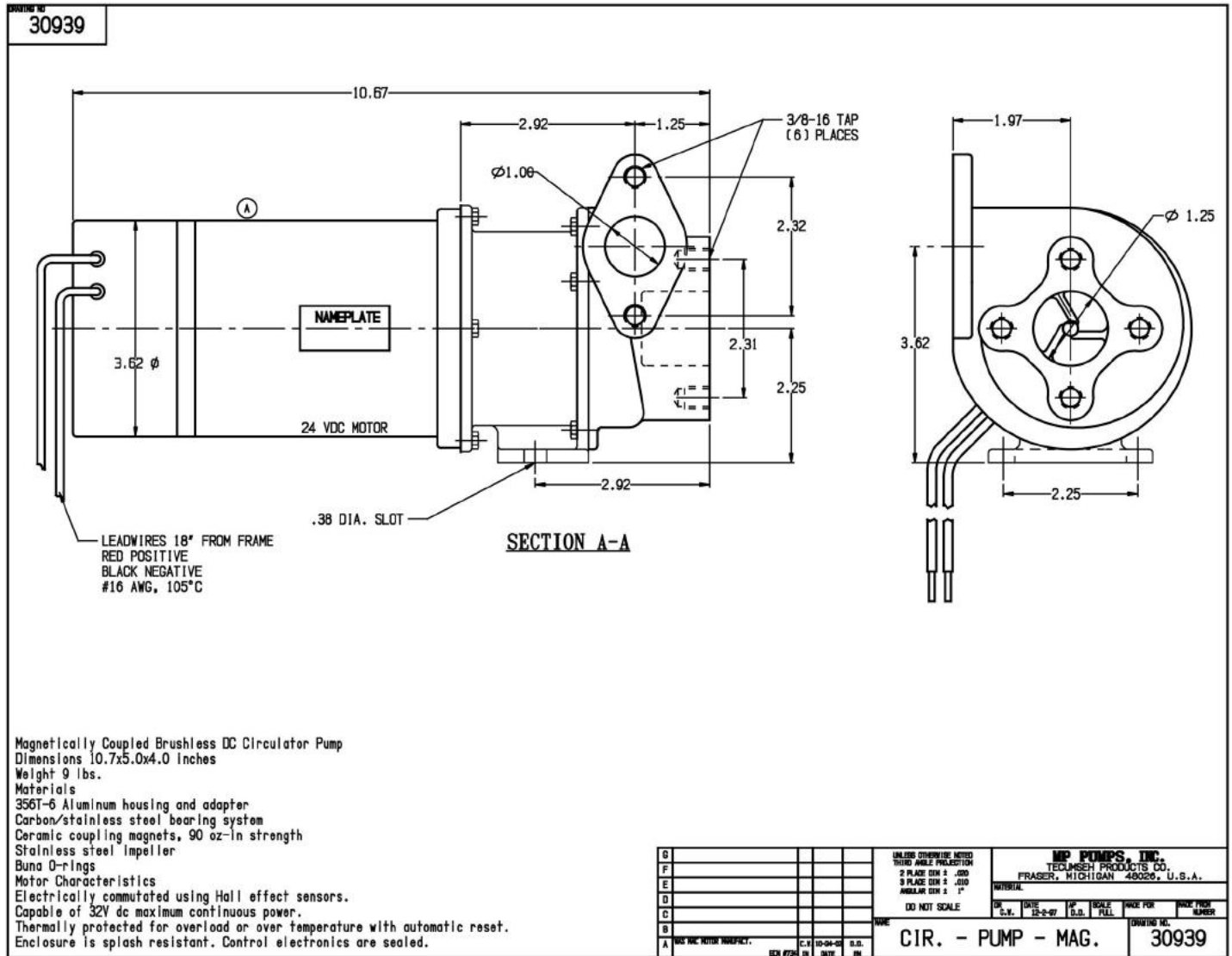
- Designed for operation in ambient temperature up to 200°F
- Designed for use with fluids up to 220°F and sustained fluid temps up to 210°F



34800 BENNETT • FRASER, MI 48026-1686
 (586) 293-8240 • FAX (586) 293-8469
 (800) 563-8006 • www.mppumps.com

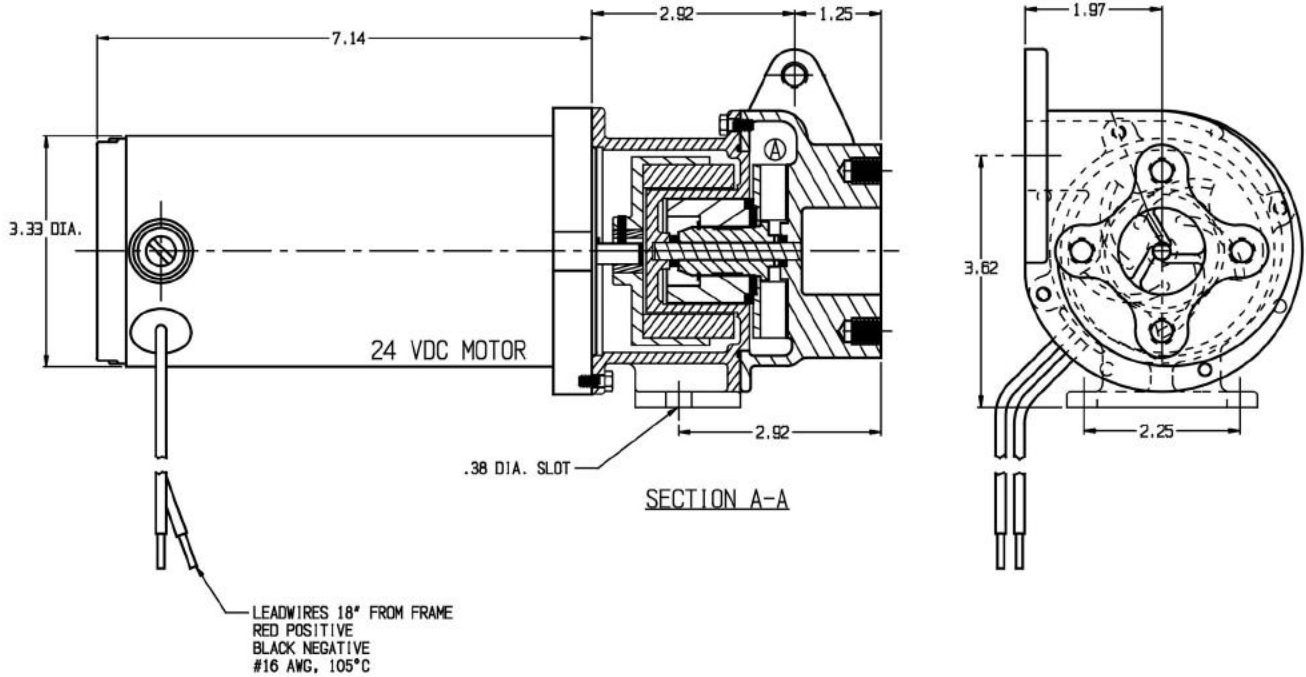


34800 BENNETT • FRASER, MI 48026-1686
 (586) 293-8240 • FAX (586) 293-8469
 (800) 563-8006 • www.mppumps.com



34800 BENNETT • FRASER, MI 48026-1686
 (586) 293-8240 • FAX (586) 293-8469
 (800) 563-8006 • www.mppumps.com

DRAWING NO
30011

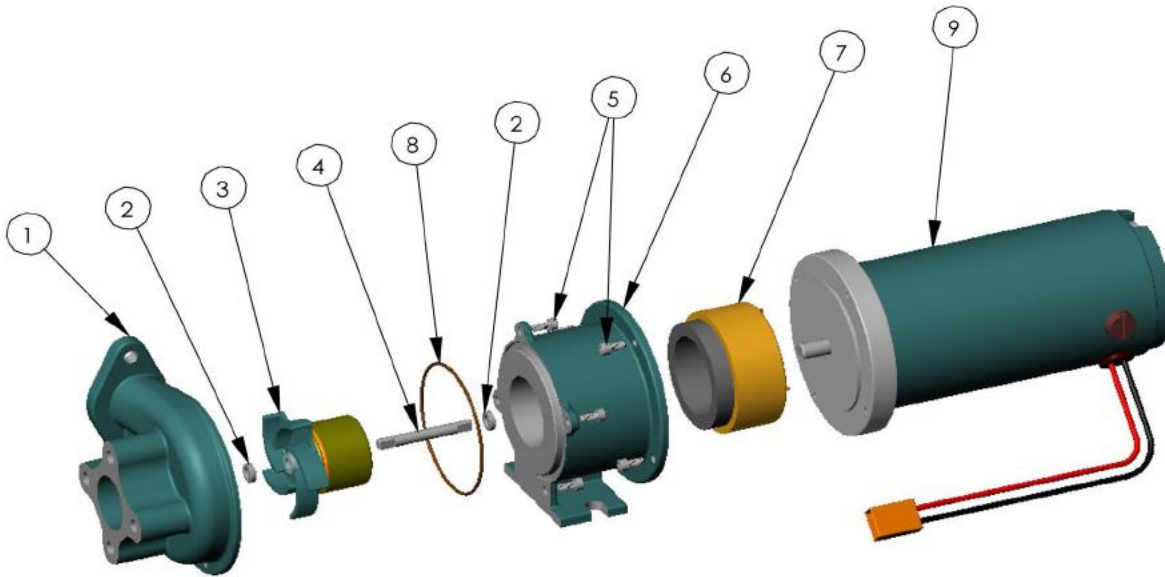


Q					UNLESS OTHERWISE NOTED THIRD ANGLE PROJECTION	MP PUMPS, INC. TECUMSEH PRODUCTS CO. FRASER, MICHIGAN 48026, U.S.A.			
F					2 PLACE DIM ± .010	MATERIAL			
E					3 PLACE DIM ± .010	DATE			
D					ANGLE DIM ± 1/2°	F.S. 4-29-07			
C					DO NOT SCALE	SCALE FULL			
B					NAME	MADE FOR			
A	NET REVISION CHANGED	EDWARD	ON	5/15/00	BY	DRAWING NO.			
					IN	30011			

CIR. - PUMP - MAG.



34800 BENNETT • FRASER, MI 48026-1686
(586) 293-8240 • FAX (586) 293-8469
(800) 563-8006 • www.mppumps.com



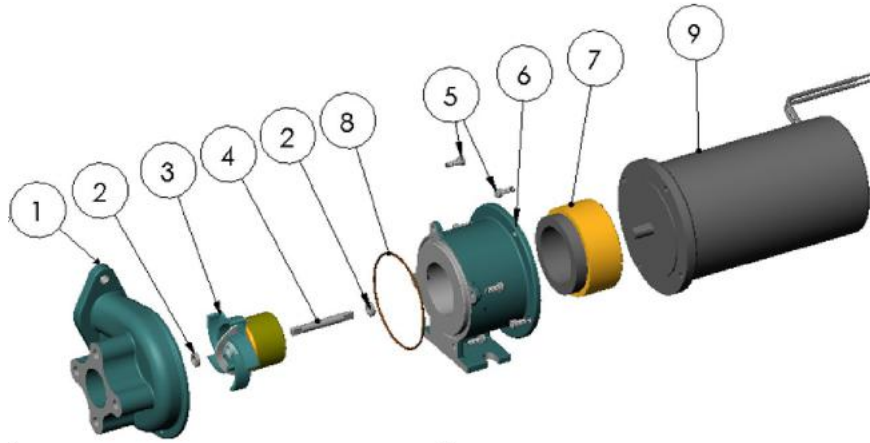
PART NO.	ITEM NO.	DESCRIPTION	QTY.		PART NO.	ITEM NO.	DESCRIPTION	QTY.
30605	1	HOUSING	1		30603	6	HOUSING	1
33445	2	WASHER S.S.	2		30769	7	DRIVE MAGNET	1
34826	3	ROTOR ASSEMBLY	1	*	30622	8	O - RING BUNA	1
33446	4	SHAFT S.S.	1		30270	9	ELECTRIC MOTOR 24 VDC	1
30297	5	CAPSCREW STL. 8-32 X 3/8 LG.	8					

*

*- RECOMMENDED REPLACEMENT PARTS



34800 BENNETT • FRASER, MI 48026-1686
 (586) 293-8240 • FAX (586) 293-8469
 (800) 563-8006 • www.mppumps.com



PART NO.	ITEM NO.	DESCRIPTION	QTY.		PART NO.	ITEM NO.	DESCRIPTION	QTY.
30805	1	HOUSING	1		30803	6	ADAPTER	1
33445	2	WASHER S.S.	2		30769	7	DRIVE MAGNET	1
34826	3	ROTOR ASSEMBLY	1		30822	8	O-RING VITON	1
33446	4	SHAFT S.S.	1		30838	9	ELECTRIC MOTOR 24 VDC	1
30297	5	CAPSCREW STL. 8-32 X 3/8 LG.	8					